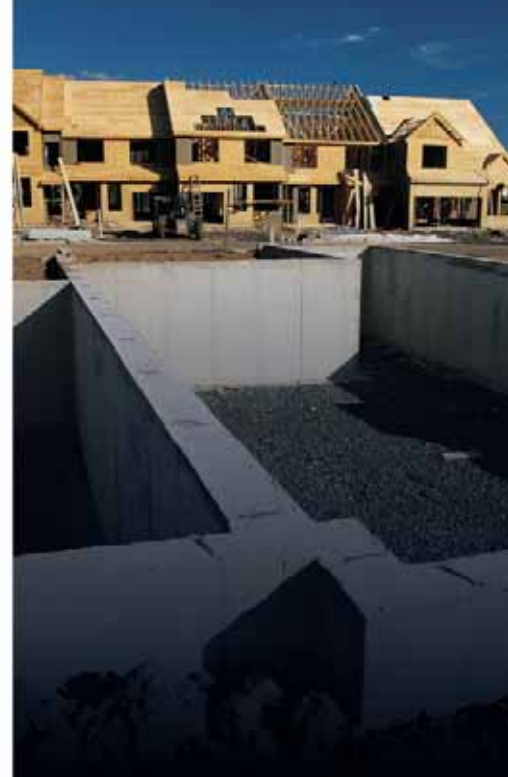


STAHL[®]

Service Bodies



COMBO BODY

STAHL's Combo Service Body combines the organized interior storage of a service body with the open cargo area of a stake body. This 12' body is available in models with 48 1/2" and 54" floor widths to fit dual rear wheel trucks with 84" cab to axles.

STANDARD FEATURES / EQUIPMENT

- Bodies are manufactured of rust-resistant **galvaneal steel** and primed with **automotive primer** for double protection against rust.
- Apitong wood **stake racks** are 16" high with polished stainless steel stakes.
- Automotive-type **clip-on door seal** keeps out water and dust.
- **Doors** are double panel construction with hat section reinforcement for added strength.
- Spring-loaded door holders hold the vertical doors in the open position and the closed position.
- Horizontal compartment **door cables** hold the door open at 90 degrees creating an additional work surface.
- **Automotive-style, easy-grip, stainless steel door handles** with rotary latches.
- Keyed-alike **lock cylinders** feature double-bitted keys for easy unlocking of doors.
- **Bright aluminum diamond plate overlay** on compartment tops, lower body edge and lower front end panels.
- Built-in **top opening compartments** with gas shocks to hold lids in open position.
- Fork-lift loadable, heavy-duty **over-cab rack** (2"x3" rectangular tubing) with 1,500 lb. capacity.
- Rear **under-deck boxes** are 35" wide x 10" high x 19" deep with one drop-down door on each side.
- Heavy-duty integral body recessed **bumper** with hitch plate and lights.
- **Tie-down rings** in loadspace front corners (2) and in the rear deck outside edges (2).
- **Undercoating** on bottom of floor and wheelwells.
- Finish paint (white) on body exterior; white compartment interiors.
- **STAHL's** Exclusive 5-year "No Rust, No Bust" warranty.



STANDARD SHELVING PACKAGE

- Front Vertical Compartment - (1) adjustable shelf and 1 adjustable material tray with dividers both sides
- Second Vertical Compartment - (2) Adjustable shelves both sides
- Horizontal Compartment - (1) Fixed material tray with dividers curbside and open streetside
- Rear Vertical Compartment - Platform extension with stake racks and underbody tool box both sides

OPTIONS

- Tow Package - 2" Class IV Receiver Hitch with 6 or 7 prong plug
- Drawer Packages
- Back Up Alarm
- Non-Forklift Loadable Rack

COMPARTMENT DIMENSIONS

- First Compartment Dimension: 24" x 37"
- Second Compartment Dimension: 32" x 37"
- Horz. Compartment Dimension: 50" x 14.5"
- Rear Compartment Dimension: 35" x 10"
- First Compartment Clear Door Dimension: 20.75" x 30.5"
- Second Compartment Clear Door Dimension: 30" x 30.5"
- Horz. Compartment Clear Door Dimension: 44.75" x 11.25"
- Rear Compartment Clear Door Dimension: 31" x 7"



Stake racks easily remove for easy access into cargo area.



STAHL®

3201 West Old Lincoln Way

Wooster, OH 44691

(330) 264-7441

Customer Service

Cardington, OH 800-277-8245

Durant, OK 800-972-9980

Merced, CA 800-348-4335

info@stahl.cc

www.stahl.cc



Photographs may contain optional equipment. Specifications subject to change without notice.